



search NorthFulton.com



Just 1 click to find out where to STAY



Home Advertising Info Publications Classifieds News Announcements Coupons Directories Galleries Calendar

**LAND AND LOTS** | **SHOPPING CENTERS** | **APARTMENT BUILDINGS**

**BUSINESS** ▶

## Presidential Financial moves to Alpharetta with money to loan

February 23, 2009

ALPHARETTA. – Presidential Financial, a large, privately held, asset-based commercial lender that serves the entire United States, announced the move of its national headquarters into the Preston Ridge III building in Alpharetta.

The company's CEO, Tom Matthesen of Alpharetta, also is chairman of the board for Fellowship Christian School in Roswell.

The 28-year-old company invested heavily in infrastructure, people, and increasing its capital base to meet the demands of the markets it serves. The company is well-capitalized and has a team of experienced professionals who assist businesses and healthcare providers in achieving their financial and growth goals by providing strategic working capital financing.



Tim Matthesen

"Our city is pleased to welcome Presidential Financial to Alpharetta," said Mayor Arthur Letchas. "Our vast market employs in excess of 120,000 people, more than three times the city's total population. Alpharetta's business community continues to grow, and we believe that Presidential will prosper in this environment."

Presidential is poised to provide mid-sized commercial businesses with credit lines of \$200,000 and up, and its healthcare division, Presidential Healthcare Credit, specializes in the unique financing of that industry with credit lines of \$500,000 and up.

The company said its expertise provides working capital financing to growing business and healthcare providers, and helps these entities succeed when facing sales growth, geographic expansion, and turnaround situations.

By utilizing the company's new Web site, [www.PresidentialFinancial.com](http://www.PresidentialFinancial.com), it is easy for companies to begin the process Presidential has trademarked "Getting You to Point B." Point B represents the measure of success as defined by the customer.

"In this tight credit market, we are pleased that Presidential has sizeable capital to help companies grow," said the company's CEO Tom Matthesen, a veteran of the financial industry. "We differentiate ourselves by acting as a trusted advisor to our clients, as well as our core service of providing funding to clients which helps them to expand their businesses, strengthen their operations, and take full advantage of market opportunities."

1883 **Reinhardt College**

The Way College Should Be for the Working Adult

Associate of Criminal Justice

Justin Wilson, Public Safety Leadership 2007 graduate

4100 Old Milton Parkway, Alpharetta, Ga 30005 770-720-9191 [www.reinhardt.edu/working\\_adult](http://www.reinhardt.edu/working_adult)

More News

- Assisted living construction about to start in Forsyth
- Forsyth chamber hosts workshop on financing when banks say no
- Fulton Sheriff sells tax liens on courthouse steps in Atlanta
- IRS offers talk on how to survive an IRS audit
- Job fairs in Waleska, Alpharetta seek experienced academics
- BB&T board declares increase in dividend
- Sembler's Canton Marketplace adds 1,200 jobs
- Metro Atlanta Home builder creates 'Safety Net' for buyers

Article Tools

- ✉ e-mail this article link to a friend
- ✉ letter to the editor about this article
- 🖨 print this article

**MILTON HEATING & AIR**

**LOWEST PRICES**

**FREE SERVICE CALL** WITH ANY REPAIR PURCHASE

**NOBODY BEATS OUR PRICES or our services**

- We'll beat any written estimate
- Furnace Tune-up \$59. 2nd Unit FREE
- AC Tune-up \$59 2nd Unit FREE
- Ask about senior discount
- Licensed, bonded, insured
- 17 years experience

**WE HONOR ALL COMPETITORS COUPONS**

770-360-1297

**LABRADOR FRIENDS**

GET INVOLVED... YOU CAN MAKE A DIFFERENCE


**North Georgia Smiles**

[NorthGeorgiaSmiles.com](http://NorthGeorgiaSmiles.com)

market opportunities."

Matthesen, who was selected to lead the company in 2008, has been a financial specialist for more than two decades, is Six Sigma certified, and lays claim to being a champion of reducing cost and improving quality. He previously has worked at SunTrust Bank, GE Capital and Heller Financial.

Matthesen's leadership is seen in the community as well. He is chairman of the Board of Fellowship Christian School in Roswell, one of the fastest-growing private Christian schools in the state. He is often heard on the speaking circuit discussing such topics as "Turnaround Management," "The Trusted Advisor Role of your Finance Partner," "Healthcare Finance," and "Entrepreneurship."

 [View images.](#)

[Print](#) [Email Link](#) [Feedback](#) [Share](#)

**Related Articles**

**BREAKING NEWS**

**Atlantan guilty in arson involving Alpharetta, Gainesville men**

Feb 25 2009

A jury late Wednesday convicted Boyd Smith, 40, of Atlanta, on a charge of conspiring to commit an arson ...

**NEWS**

**Group holds public meeting supporting Ga. 9 library site**

Feb 26 2009

A group of Alpharetta and Milton citizens believe they have the perfect site for the proposed 25,000-square-foot ...

**NEWS**

**Group holds public meeting supporting Ga. 9 library site**

Feb 26 2009

A group of Alpharetta and Milton citizens believe they have the perfect site for the proposed 25,000-square-foot ...

**NEWS**

**Calabash Cotillion promises good time for good cause**

Feb 26 2009

All the swells, the sweet elite, the hoi and the poloi will present themselves March 7 for the 22nd ...

**NEWS**

**North Fulton Community Charities cramped for space**

Feb 26 2009

...

[list all](#) | [52 additional items...](#)

**Related Blog comments**

**TECHNO BOB**

**AT&T enhancing 3G network in Alpharetta, across Georgia**

Alpharetta will get enhanced 3G network coverage under AT&T's network expansion plans for Georgia in ...

**TELL US WHAT YOU THINK Submission**  
BEFORE YOU POST FEEDBACK PLEASE CONSIDER THE FOLLOWING:

- \* 1. **Keep it clean.** Comments that are obscene, vulgar, lewd or sexually-oriented will get deleted. Repeat offenders will be banned.
  - \* 2. **No threats.** Don't threaten to hurt or kill anyone.
  - \* 3. **Be truthful.** Don't make up lies about anyone or anything.
  - \* 4. **Play nice.** No racism, sexism or any other sort of -ism that is degrading.
  - \* 5. **Help us get it right.** If you find a factual error or typo, email [webmaster@northfulton.com](mailto:webmaster@northfulton.com).
  - \* 6. **By submitting feedback** you acknowledge that it may be printed as a Letter To The Editor.
  - \* 7. **ALL CAPS.** Posts that are entirely ALL CAPS are considered rude and will be deleted.
- \* required value

Title:

\*Body:

\*Name:

\*City:

\*Email:

[Appen Inc.](#) | 319 N. Main St. | Alpharetta, GA | 30009 | 770-442-3278

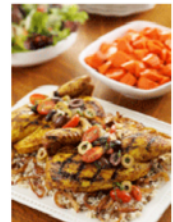
**Recruit Screen**  
The Truth Revealed - Screening in the Know  
EMPLOYMENT & BUSINESS SCREENING  
WWW.RECRUITSCREEN.COM

Pre-Employment and Business Background Screening  
CLICK HERE TO LEARN MORE

powered by  
Linear Publishing  
copyright 1999 - 2009

[Northgeorgiamiles.com](http://northgeorgiamiles.com)  
NORTH GEORGIA'S SOURCE FOR COSMETIC AND FAMILY DENTISTRY

Dr. Seth A. Giltree  
D.M.D.  
F.A.G.D.



**Beverage Depot**  
3355 Highway 9 Alpharetta  
770-740-1410

Spirits